

## ECM AIR

ECM AIR is an ambient air monitoring data systems providing data collection, archiving and presentation in accordance to EU regulations.

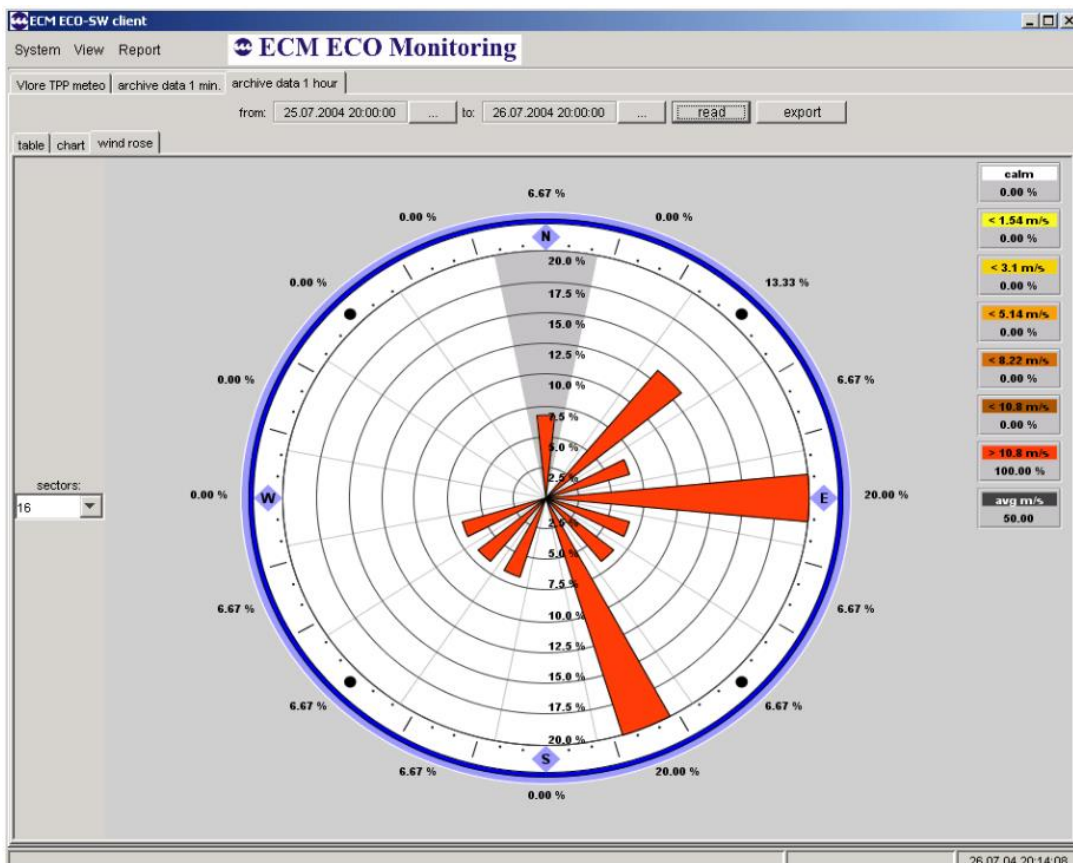
The architecture is a client / server one allowing web server functions.

Data can be presented in graphical or table forms, accessed via internet or mobile devices and is supporting presentation on public display units.

The system is consisting from station level equipment and from a central station.

The station level equipment is a DLX1 data logger communicating to the analyzers, monitors and sensors.

The central station is a PC server with a software based on a Promotic Amb system.



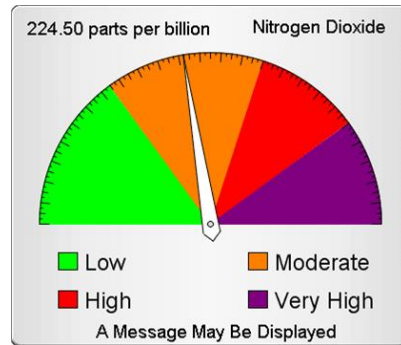
### ECM AIR – main functions

- Periodic data acquisition from the data loggers
- Presentation of collected data in form of wind roses, time lines, maps, tables or other desired formats
- Archiving of data in a safe data base

**Processing**

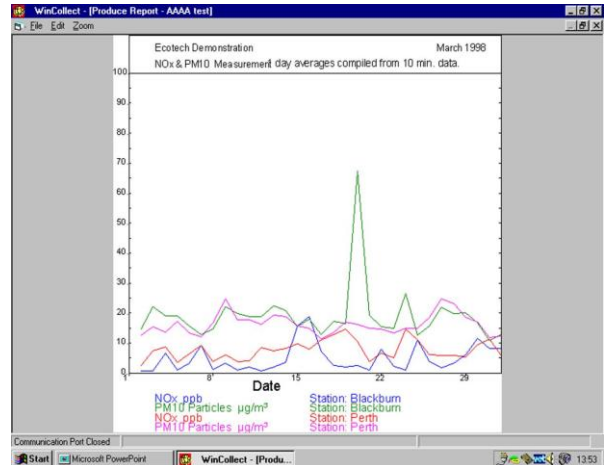
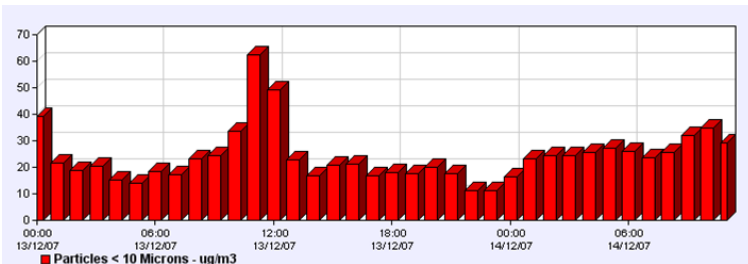
**Aquisition, Processing and Storage of Following Main Data Blocks from Station Dataloggers**

- 1 hour and 10 minute averages of measured parameters (alternatively different time base can be defined)
- Calibration protocols including remote calibration control
- Station configuration including remote modifications
- Test functions
- Processing of alarms
- Monitoring of internal parameters of monitoring equipment
- Running of a database
- Data recovery upon communication or power problems
- Communication to public display devices
- Internet functions



**Data evaluation**

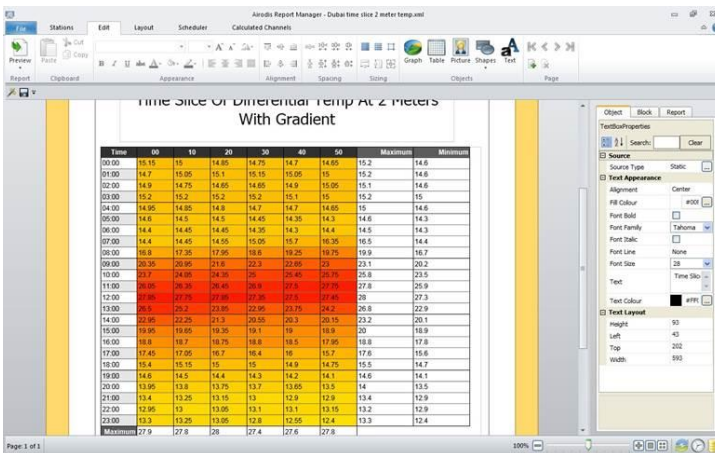
- Pollution characteristics including statistics
- Exceeding of limit values
- Wind roses, time lines, graphs
- Protocols in accordance to EU regulations
- Logging of events and alarms



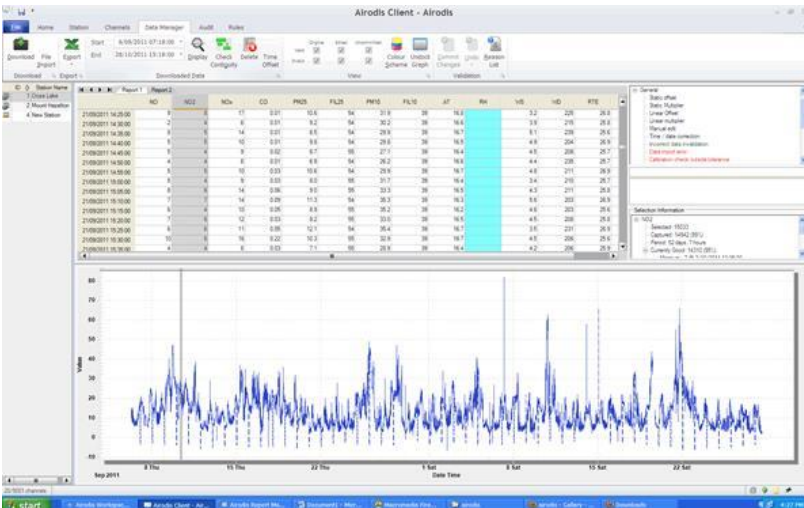
## Monitoring functions

- Possibility to set all parameters in central PC
- Data presentation in tabular and graphical form
- Included Web Server – possibility to present the monitoring on Intranet Web client visualization
- Multilingual support
- Safe password protection system

## Service functions



- Possibility of a remote service supervision
- Remote Access to the application allows flexible service on the main PC and data loggers both



## ECM AIR - Optimal function

- System extension
- Data export in different forms
- Support of new web clients
- Dispersion modeling to forecast pollution in desired locations defined in a GIS system
- Support of simpler monitoring devices using professional stations as a reference